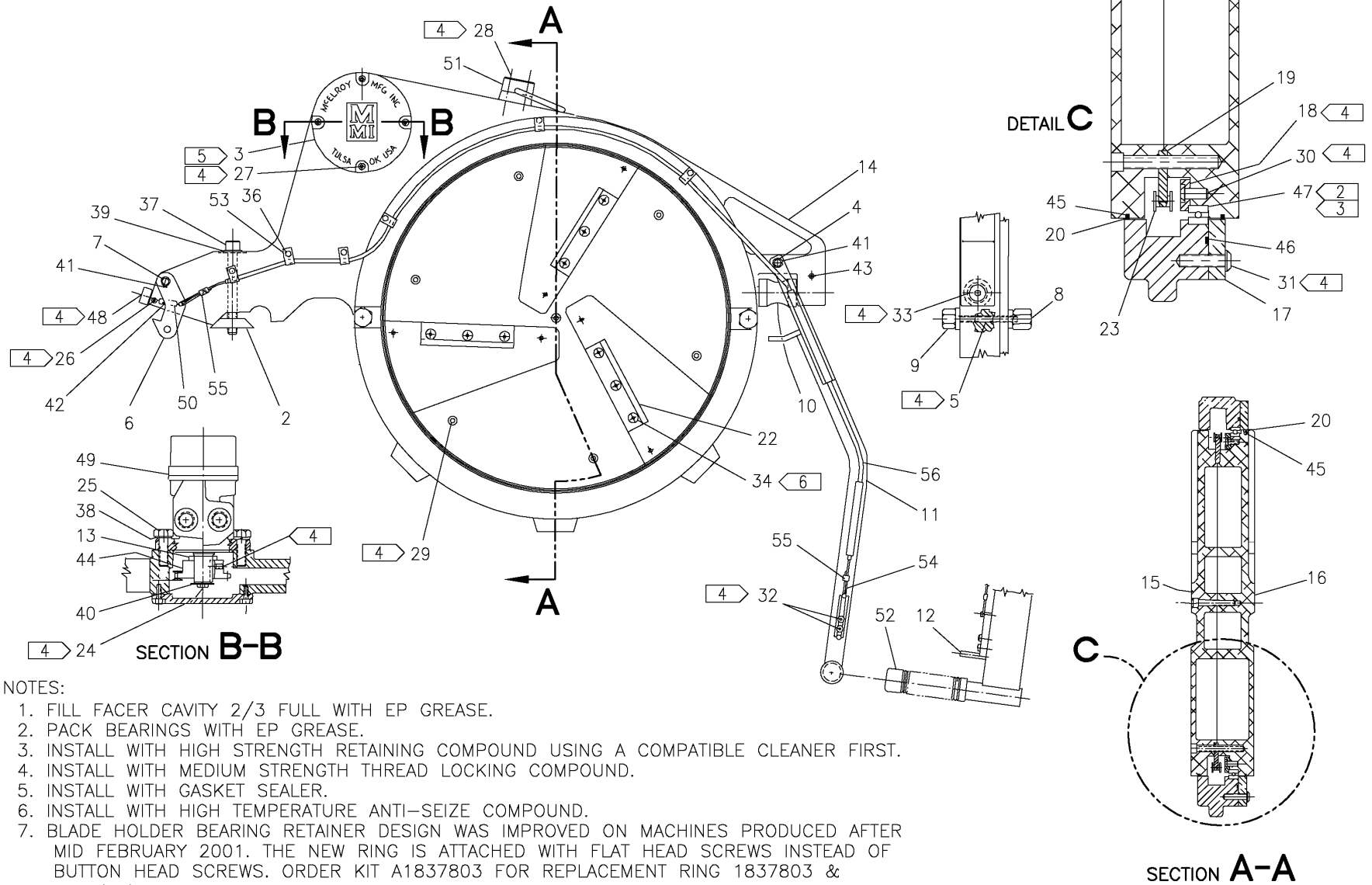




McElroy Manufacturing, Inc.
The leader by design.
Tulsa, Oklahoma U.S.A.

DRAWN: SWB	CHECK: JRP	APPRV'D: B	DATE: 4/25/95	DWG No: 1834100	SHT No: 1	REV No: K	PART No: 1834101
#618 FACER ASSEMBLY							CAD No: 1834101

NOTE: THIS DRAWING AND THE INFORMATION CONTAINED THEREIN IS THE CONFIDENTIAL AND PROPRIETARY PROPERTY OF McElroy Manufacturing, Inc. THE DRAWING IS NOT TO BE REPRODUCED IN ANY MANNER, SUBMITTED OUTSIDE PARTIES FOR EXAMINATION, OR USED DIRECTLY OR INDIRECTLY FOR THE PURPOSES OTHER THAN THOSE FOR WHICH IT WAS FURNISHED WITHOUT WRITTEN PERMISSION OF McElroy Manufacturing, Inc.



NOTES:

1. FILL FACER CAVITY 2/3 FULL WITH EP GREASE.
2. PACK BEARINGS WITH EP GREASE.
3. INSTALL WITH HIGH STRENGTH RETAINING COMPOUND USING A COMPATIBLE CLEANER FIRST.
4. INSTALL WITH MEDIUM STRENGTH THREAD LOCKING COMPOUND.
5. INSTALL WITH GASKET SEALER.
6. INSTALL WITH HIGH TEMPERATURE ANTI-SEIZE COMPOUND.
7. BLADE HOLDER BEARING RETAINER DESIGN WAS IMPROVED ON MACHINES PRODUCED AFTER MID FEBRUARY 2001. THE NEW RING IS ATTACHED WITH FLAT HEAD SCREWS INSTEAD OF BUTTON HEAD SCREWS. ORDER KIT A1837803 FOR REPLACEMENT RING 1837803 & QTY (12) MAD00043 SCREWS.
8. SEE 1804003RW DETAIL DRAWING TO REWORK A FACER BODY WORN AT PIVOT ARM ATTACHMENT POINT.

McElroy Manufacturing Parts List

Part Number: 1834101 No. 618 Facer Assembly

Part Number 1834101 Component List

Item	Component	Description	Quantity	Unit	Price
2	816101	Fcr Wedge	1.0	EA	34.95
3	1231102	Cover Plate	1.0	EA	77.25
4	1225402	Fcr Latch Handle Pivot Pin	1.0	EA	86.05
5	1804102	3-5/8LG Rest Button Mtg Scr;sp	2.0	EA	7.46
6	1805501	Fcr Latch	1.0	EA	92.00
7	1806702	Latch Pivot Pin	1.0	EA	25.46
8	1807001	Rest Button	2.0	EA	64.00
9	1807002	Rest Button	2.0	EA	58.42
10	1809101	Guide Rod Roller	1.0	EA	88.22
11	1817302	Latch Handle Weldment	1.0	EA	461.00
12	1818703	18 Fcr Release Trigger	1.0	EA	122.00
13	1835401	Fcr Drive Sprocket Spacer	1.0	EA	21.65
14	1837502	Fcr Body	1.0	EA	3,679.00
15	1837603	C'bored Blade Holder	1.0	EA	3,031.00
16	1837604	Tapped Blade Holder	1.0	EA	3,031.00
17	1837702	Fcr Body Bearing Retainer	1.0	EA	798.00
18	1837803	Blade Holder Bearing Retainer	1.0	EA	530.00
19	1838101	Driven Sprocket Mod	1.0	EA	683.00
20	1838201	Slipper Seal	2.0	EA	131.00
21	1834103	Facer Hydraulic / Plumbing Schematic	1.0	EA	0.00
22	3615701	28/412/618 Facer Blade 5" long	6.0	EA	98.00
23	A1812401	18 Fcr Chain Assy	1.0	EA	70.32
24	MAB00002	1/4-20NCX1/2LG Hhcs	1.0	EA	0.17
25	MAB00069	1/2-13NCX1-1/2LG Hhcs	2.0	EA	0.59
26	MAC00035	#10-24NCX3/8LG Shcs PL	1.0	EA	0.49
27	MAH00052	1/4-20NC X 3/4"LG Shcs SS	4.0	EA	1.06
28	MAC00075	5/16-18NCX1LG Shcs PL	2.0	EA	1.17
29	MAC00078	5/16-18NCX1-3/4LG Shcs PL	7.0	EA	2.00
30	MAD00043	1/4-20NCX5/8LG Fhscs	12.0	EA	0.69
31	MAE00047	5/16-18NCX1-1/4LG Bhscs (Effective 6/4/90 to 5/12/19)	10.0	EA	1.23
31	MAE00142	5/16-18NCX1-1/4LG Bhscs PL	10.0	EA	1.90
32	MAF00001	1/4DIAX3/8LG Skt HD Shldr Scr	2.0	EA	2.96
33	MAF00069	5/8DIAX3LG Skt HD Shldr Scr	1.0	EA	23.50
34	MAH00073	1/4-20NCX5/8LG Fhscs SS	18.0	EA	0.64
36	MAH00111	#10-24NCX1/2LG Hwh TF Screw SS	6.0	EA	0.39
37	MAN00019	1/2-13NCX4-1/2LG Shcs SS	1.0	EA	16.29
38	MBE00009	1/2 Reg Split Lck Washer Stl PL	2.0	EA	0.14
39	MBF00009	1/2 TY 'a' Wide FL Wshr Stl PL	1.0	EA	0.00
40	MBG00031	1/4 Fender Washer Stl PL	1.0	EA	0.30
41	MCB00017	Ext Snap Ring	4.0	EA	0.94
42	MCG00005	3/16 DIA X 1LG Roll Pin	1.0	EA	0.11
43	MCG00012	1/4DIA X 2-1/2LG Roll Pin	1.0	EA	0.90
44	MDF00028	1B, 1/4KEY,#40BS17 Chain Sprkt	1.0	EA	38.17
45	1838202	Blade Holder O-ring	2.0	EA	9.05
46	1838203	Facer Body O-ring	1.0	EA	9.86
47	MDM00032	18IDX19ODX0.5HT Ball Bearing	1.0	EA	1,905.00
48	MDM00055	Cam Follower	1.0	EA	43.33
49	MEC00004	1"SHT,1/4K,11.9CID Hyd Mtr	1.0	EA	766.00
50	MJE00001	Spring	1.0	EA	2.88
51	MJH00001	Hoist Ring	1.0	EA	96.00
52	MJJ00002	1" Black Hand Grip	1.0	EA	3.81
53	MJQ00024	Jiffy Clip	6.0	EA	0.93
54	1824601	Trigger Cable	1.0	EA	16.10
55	MJQ00046	Ferrule	2.0	EA	0.93
56	1824701	Cable Guide	1.0	EA	32.30

McElroy Manufacturing Parts List

Part Number: 1834101 No. 618 Facer Assembly

Please visit <https://fusion.mcelroy.com/parts> to purchase parts or for more information.

